

ILLINOIS DEPARTMENT OF LABOR

STATE OF ILLINOIS

ILLINOIS OSHA

FY 2019 State OSHA Annual Report (SOAR)

October 1, 2018 through September 30, 2019

Michael D. Kleinik
Director

JB Pritzker
Governor



DECEMBER 2019

**ILLINOIS DEPARTMENT OF LABOR STATE PLAN
FY 2019 STATE OSHA ANNUAL REPORT**

Table of Contents

I. Executive Summary.....	p. 2
II. State Plan Overview.....	p. 3
III. Summary of Annual Performance Plan Results.....	p. 4-18
IV. Progress Toward Strategic Plan Accomplishments.....	p. 19-21
V. Mandated Activities.....	p. 22-26
VII. Adjustments.....	p. 27

EXECUTIVE SUMMARY

The Illinois Department of Labor (IDOL) Illinois OSHA Division submits this State OSHA Annual Report (SOAR) to the Federal Occupational Safety and Health Administration (OSHA) for evaluation of the State program. The SOAR covers activity from October 1, 2018 through September 30, 2019. This submission is in accordance with the State Plan Policies and Procedures Manual dated September 22, 2015.

During FY 2019, Illinois OSHA continued to improve processes, policies and procedures to ensure that the program met performance goals. The following summary of Illinois OSHA's FY 2019 Annual Performance Goals details Illinois OSHA's progress toward meeting all grant requirements and fostering safe and healthful workplaces for all Illinois public-sector employees.

STATE PLAN OVERVIEW

IDOL – Illinois OSHA operates a public-sector-only OSHA developmental state program. The Director of Illinois OSHA administers the Illinois State Plan under the leadership of the Director of IDOL. Illinois OSHA enforces safety and health standards in public-sector workplaces, provides public-sector consultation services, investigates public-sector occupational safety and health whistleblower complaints, adopts “at least as effective as Federal OSHA standards” and provides public-sector outreach services. In Illinois, the U.S. Department of Labor, Occupational Safety and Health Administration enforces private-sector safety and health standards.

Safety and health inspectors conduct public-sector enforcement activities. Each inspector conducts Programmed Planned Inspections (PPIs), responds to worker complaints and investigates serious accidents, including fatalities. Illinois OSHA ensures employee participation and offers compliance assistance throughout every inspection. A strong enforcement presence establishes an effective deterrent for public-sector employers who fail to meet their occupational safety and health responsibilities.

Consultation services, partnerships, and alliances enable state and local government employers to initiate a proactive approach to improving their safety and health management programs and eliminate hazards in their workplaces. Illinois OSHA consultants assist Illinois public-sector employers in establishing quality safety and health programs, preventing occupational deaths, injuries and illnesses, identifying and eliminating workplace hazards and interpreting the Illinois Occupational Safety and Health Act and OSHA standards. The consultants note any workplace hazards without issuing citations, penalties or enforcement actions. Illinois OSHA created a Safety and Health Achievement Recognition Program (SHARP) for small public-sector employers in FY 2015, which will continue through FY 2020.

Illinois OSHA’s Whistleblower Investigation Program is parallel to section 11(c) of the OSH Act, with policies and procedures for occupational safety and health whistleblower protection at least as effective as the Federal 11(c) policies. Illinois OSHA and the IDOL Conciliation and Mediation Division (Con/Med) executed a memorandum of understanding (MOU) to allow Con/Med Labor Conciliators to handle Illinois OSHA whistleblower complaints. The Labor Conciliators bring expertise in whistleblower complaint investigations pursuant to other acts under their enforcement authority. This MOU allows uninterrupted service to all whistleblower complainants and allows Illinois OSHA inspectors to remain focused on safety and health inspections. The MOU does not affect the legal authority to investigate workplace retaliation or whistleblower complaints under state law. The Illinois State Plan and all its regulations remain in effect.

SUMMARY OF ANNUAL PERFORMANCE PLAN RESULTS

Strategic Goal #1: Improve workplace safety and health for all public-sector employees as evidenced by fewer hazards, reduced exposures and fewer injuries, illnesses and deaths.																	
Annual Performance Goal # 1.1	Reduce the number of worker injuries and illnesses by focusing statewide attention and resources on the most prevalent types of injuries and illnesses in the most hazardous public-sector occupations and workplaces.																
Strategy	Decrease injury and illness rates in state, county and/or local agencies in the specific NAICS segments by two percent by FY 2020. 1.1 State Support Activities for Transportation (NAICS 488) OSHA Directive: CPL 02-01-054, Inspection and Citation Guidance for Roadway and Highway Construction Work Zones																
Performance Indicator(s) (including activity, intermediate outcome, and primary outcome measures)	Activity Measure: <ul style="list-style-type: none"> 15 inspections conducted in targeted NAICS 1 public-sector consultation visit conducted in targeted NAICS 1 outreach/training and education seminar conducted in targeted NAICS 75 marketing materials distributed Intermediate Outcome Measures: <ul style="list-style-type: none"> Each year, track and document targeted NAICS BLS total recordable case data. Evaluate decrease in total recordable cases by 0.4% each year. Primary Outcome Measures: <ul style="list-style-type: none"> Decrease injury and illness rates (total recordable cases) in state, county and/or local agencies in the specific NAICS segments by 2% by FY 2020. 																
FY 2019 Results	<ul style="list-style-type: none"> 15 inspections conducted 2 public-sector consultation visits conducted 1 outreach/training and education seminars conducted 721 outreach materials distributed 																
Conclusion	Illinois OSHA met all activity measures for FY 2019. Averaged 2015, 2016, 2017 & 2018 BLS data revealed an 8% increase in total recordable cases. <table border="1" style="margin: 10px auto; border-collapse: collapse; text-align: center;"> <tr> <td style="padding: 5px;">BASELINE</td> <td style="padding: 5px;">FY 2020 TARGET</td> </tr> <tr> <td style="padding: 5px;">7.3 Total Recordable Cases (TRC) (averaged BLS 2009-2012 for NAICS 488)</td> <td style="padding: 5px;">2% Reduction in TRC</td> </tr> </table> <table border="1" style="margin: 10px auto; border-collapse: collapse; text-align: center;"> <thead> <tr> <th style="padding: 5px;">FY 2016 RESULTS</th> <th style="padding: 5px;">FY 2017 RESULTS</th> <th style="padding: 5px;">FY 2018 RESULTS</th> <th style="padding: 5px;">FY 2019 RESULTS</th> <th style="padding: 5px;">AVG</th> <th style="padding: 5px;">OVERALL % CHANGE</th> </tr> </thead> <tbody> <tr> <td style="padding: 5px;">7.7 2015 TRC BLS Data</td> <td style="padding: 5px;">6.6 2016 TRC BLS Data</td> <td style="padding: 5px;">8.9 2017 TRC BLS Data*</td> <td style="padding: 5px;">8.4 2018 TRC BLS Data*</td> <td style="padding: 5px;">7.9</td> <td style="padding: 5px;">8% Increase in TRC</td> </tr> </tbody> </table> <p style="font-size: small; margin-top: 5px;">*2017 & 2018 BLS data for this NAICS did not meet BLS standard publication data criteria.</p>	BASELINE	FY 2020 TARGET	7.3 Total Recordable Cases (TRC) (averaged BLS 2009-2012 for NAICS 488)	2% Reduction in TRC	FY 2016 RESULTS	FY 2017 RESULTS	FY 2018 RESULTS	FY 2019 RESULTS	AVG	OVERALL % CHANGE	7.7 2015 TRC BLS Data	6.6 2016 TRC BLS Data	8.9 2017 TRC BLS Data*	8.4 2018 TRC BLS Data*	7.9	8% Increase in TRC
BASELINE	FY 2020 TARGET																
7.3 Total Recordable Cases (TRC) (averaged BLS 2009-2012 for NAICS 488)	2% Reduction in TRC																
FY 2016 RESULTS	FY 2017 RESULTS	FY 2018 RESULTS	FY 2019 RESULTS	AVG	OVERALL % CHANGE												
7.7 2015 TRC BLS Data	6.6 2016 TRC BLS Data	8.9 2017 TRC BLS Data*	8.4 2018 TRC BLS Data*	7.9	8% Increase in TRC												

SUMMARY OF ANNUAL PERFORMANCE GOALS

Annual Performance Goal # 1.2	Reduce the number of worker injuries and illnesses by focusing statewide attention and resources on the most prevalent types of injuries and illnesses in the most hazardous public occupations and workplaces.																
Strategy	<p>Decrease injury and illness rates in state, county and/or local agencies in the specific NAICS segments by two percent by FY 2020.</p> <p>1.2 State Nursing and Residential Care Facilities (NAICS 623)</p> <p>OSHA Directive: CPL 02-01-052, Enforcement Procedures for Investigating or Inspecting Workplace Violence Incidents</p>																
Performance Indicator(s) (including activity, intermediate outcome, and primary outcome measures)	<p>Activity Measure:</p> <ul style="list-style-type: none"> • 1 inspection conducted in targeted NAICS • 42 marketing materials distributed <p>Intermediate Outcome Measures:</p> <ul style="list-style-type: none"> • Each year, track and document targeted NAICS BLS total recordable case data. Evaluate decrease in total recordable cases by 0.4% each year. <p>Primary Outcome Measures:</p> <ul style="list-style-type: none"> • Decrease injury and illness rates (total recordable cases) in state, county and/or local agencies in the specific NAICS segments by 2% by FY 2020. 																
FY 2019 Results	<ul style="list-style-type: none"> • 2 inspections conducted • 44 marketing materials were distributed 																
Conclusion	<p>Illinois OSHA met activity measures for FY 2019.</p> <p>Averaged 2015, 2016, 2017 & 2018 BLS data revealed an 8% reduction in total recordable cases.</p> <table border="1" style="margin-left: auto; margin-right: auto; border-collapse: collapse;"> <tr> <td style="text-align: center;">BASELINE</td> <td style="text-align: center;">FY 2020 TARGET</td> </tr> <tr> <td style="text-align: center;">13.2 Total Recordable Cases (TRC) (averaged BLS 2009-2012 for NAICS 623)</td> <td style="text-align: center;">2% Reduction in TRC</td> </tr> </table> <table border="1" style="margin-left: auto; margin-right: auto; border-collapse: collapse; width: 100%;"> <thead> <tr> <th style="text-align: center;">FY 2016 RESULTS</th> <th style="text-align: center;">FY 2017 RESULTS</th> <th style="text-align: center;">FY 2018 RESULTS</th> <th style="text-align: center;">FY 2019 RESULTS</th> <th style="text-align: center;">AVG</th> <th style="text-align: center;">OVERALL % CHANGE</th> </tr> </thead> <tbody> <tr> <td style="text-align: center;">12 2015 TRC BLS Data</td> <td style="text-align: center;">13.7 2016 TRC BLS Data</td> <td style="text-align: center;">10.9 2017 TRC BLS Data</td> <td style="text-align: center;">11.9 2018 TRC BLS Data</td> <td style="text-align: center;">12.1</td> <td style="text-align: center;">8% Reduction in TRC</td> </tr> </tbody> </table>	BASELINE	FY 2020 TARGET	13.2 Total Recordable Cases (TRC) (averaged BLS 2009-2012 for NAICS 623)	2% Reduction in TRC	FY 2016 RESULTS	FY 2017 RESULTS	FY 2018 RESULTS	FY 2019 RESULTS	AVG	OVERALL % CHANGE	12 2015 TRC BLS Data	13.7 2016 TRC BLS Data	10.9 2017 TRC BLS Data	11.9 2018 TRC BLS Data	12.1	8% Reduction in TRC
BASELINE	FY 2020 TARGET																
13.2 Total Recordable Cases (TRC) (averaged BLS 2009-2012 for NAICS 623)	2% Reduction in TRC																
FY 2016 RESULTS	FY 2017 RESULTS	FY 2018 RESULTS	FY 2019 RESULTS	AVG	OVERALL % CHANGE												
12 2015 TRC BLS Data	13.7 2016 TRC BLS Data	10.9 2017 TRC BLS Data	11.9 2018 TRC BLS Data	12.1	8% Reduction in TRC												

SUMMARY OF ANNUAL PERFORMANCE GOALS

Annual Performance Goal # 1.3	Reduce the number of worker injuries and illnesses by focusing statewide attention and resources on the most prevalent types of injuries and illnesses in the most hazardous public occupations and workplaces.																
Strategy	<p>Decrease injury and illness rates in state, county and/or local agencies in the specific NAICS segments by two percent by FY 2020.</p> <p>1.3 Local Fire Protection (NAICS 92216)</p>																
Performance Indicator(s) (including activity, intermediate outcome, and primary outcome measures)	<p>Activity Measure:</p> <ul style="list-style-type: none"> • 65 inspections conducted in targeted NAICS • 2 public-sector consultation visits conducted in targeted NAICS • 1 outreach/training and education seminar conducted in targeted NAICS • 75 marketing materials distributed • 1 alliance/partnership established <p>Intermediate Outcome Measures:</p> <ul style="list-style-type: none"> • Each year, track and document targeted NAICS BLS total recordable case data. Evaluate decrease in total recordable cases by 0.4% each year. <p>Primary Outcome Measures:</p> <ul style="list-style-type: none"> • Decrease injury and illness rates (total recordable cases) in state, county and/or local agencies in the specific NAICS segments by 2% by FY 2020. 																
FY 2019 Results	<ul style="list-style-type: none"> • 75 inspections conducted • 6 public-sector consultation visits conducted • 3 outreach/training and education seminars conducted • 3,446 marketing materials distributed • 1 alliance established 																
Conclusion	<p>Illinois OSHA met the activity measures for FY 2019.</p> <p>Averaged 2015, 2016, 2017 & 2018 BLS data revealed a 2% reduction in total recordable cases.</p> <table border="1" style="margin-left: auto; margin-right: auto; border-collapse: collapse;"> <tr> <td style="text-align: center;">BASELINE</td> <td style="text-align: center;">FY 2020 TARGET</td> </tr> <tr> <td style="text-align: center;">10.6 Total Recordable Cases (TRC) <small>(averaged BLS 2009-2012 for NAICS 92216)</small></td> <td style="text-align: center;">2% Reduction in TRC</td> </tr> </table> <table border="1" style="margin-left: auto; margin-right: auto; border-collapse: collapse;"> <thead> <tr> <th style="text-align: center;">FY 2016 RESULTS</th> <th style="text-align: center;">FY 2017 RESULTS</th> <th style="text-align: center;">FY 2018 RESULTS</th> <th style="text-align: center;">FY 2019 RESULTS</th> <th style="text-align: center;">AVG</th> <th style="text-align: center;">OVERALL % CHANGE</th> </tr> </thead> <tbody> <tr> <td style="text-align: center;">9.5 2015 TRC BLS Data</td> <td style="text-align: center;">9.5 2016 TRC BLS Data</td> <td style="text-align: center;">11.8 2017 TRC BLS Data*</td> <td style="text-align: center;">10.5 2018 TRC BLS Data</td> <td style="text-align: center;">10.3</td> <td style="text-align: center;">2% Reduction in TRC</td> </tr> </tbody> </table> <p><small>*2017 and 2018 BLS data for this NAICS did not meet BLS standard publication data criteria.</small></p>	BASELINE	FY 2020 TARGET	10.6 Total Recordable Cases (TRC) <small>(averaged BLS 2009-2012 for NAICS 92216)</small>	2% Reduction in TRC	FY 2016 RESULTS	FY 2017 RESULTS	FY 2018 RESULTS	FY 2019 RESULTS	AVG	OVERALL % CHANGE	9.5 2015 TRC BLS Data	9.5 2016 TRC BLS Data	11.8 2017 TRC BLS Data*	10.5 2018 TRC BLS Data	10.3	2% Reduction in TRC
BASELINE	FY 2020 TARGET																
10.6 Total Recordable Cases (TRC) <small>(averaged BLS 2009-2012 for NAICS 92216)</small>	2% Reduction in TRC																
FY 2016 RESULTS	FY 2017 RESULTS	FY 2018 RESULTS	FY 2019 RESULTS	AVG	OVERALL % CHANGE												
9.5 2015 TRC BLS Data	9.5 2016 TRC BLS Data	11.8 2017 TRC BLS Data*	10.5 2018 TRC BLS Data	10.3	2% Reduction in TRC												

SUMMARY OF ANNUAL PERFORMANCE GOALS

Annual Performance Goal # 1.4	Reduce the number of worker injuries and illnesses by focusing statewide attention and resources on the most prevalent types of injuries and illnesses in the most hazardous public occupations and workplaces.																
Strategy	<p>Decrease injury and illness rates in state, county and/or local agencies in the specific NAICS segments by two percent by FY 2020.</p> <p>1.4 Departments of Public Works (NAICS 926120)</p>																
Performance Indicator(s) (including activity, intermediate outcome, and primary outcome measures)	<p>Activity Measures:</p> <ul style="list-style-type: none"> • 65 inspections conducted in targeted NAICS • 2 public-sector consultation visits conducted in targeted NAICS • 1 outreach/training and education seminar conducted in targeted NAICS • 75 marketing materials distributed <p>Intermediate Outcome Measures:</p> <ul style="list-style-type: none"> • Each year, track and document targeted NAICS BLS total recordable case data. Evaluate decrease in total recordable cases by 0.4% each year. <p>Primary Outcome Measures:</p> <ul style="list-style-type: none"> • Decrease injury and illness rates (total recordable cases) in state, county and/or local agencies in the specific NAICS segments by 2% by FY 2020. 																
FY 2019 Results	<ul style="list-style-type: none"> • 77 inspections conducted • 8 public-sector consultation visits conducted • 1 outreach/training and education seminars conducted • 3,649 marketing materials distributed 																
Conclusion	<p>Illinois OSHA met most of the activity measures for FY 2019.</p> <p>Averaged 2015, 2016, 2017 & 2018 BLS data revealed a 14% reduction in total recordable cases.</p> <table border="1" style="margin-left: auto; margin-right: auto; border-collapse: collapse;"> <tr> <td style="text-align: center; padding: 5px;">BASELINE</td> <td style="text-align: center; padding: 5px;">FY 2020 TARGET</td> </tr> <tr> <td style="text-align: center; padding: 5px;">7.7 Total Recordable Cases (TRC) <small>(averaged BLS 2009-2012 for NAICS 926120)</small></td> <td style="text-align: center; padding: 5px;">2% Reduction in TRC</td> </tr> </table> <table border="1" style="margin-left: auto; margin-right: auto; border-collapse: collapse; width: 100%;"> <thead> <tr> <th style="text-align: center;">FY 2016 RESULTS</th> <th style="text-align: center;">FY 2017 RESULTS</th> <th style="text-align: center;">FY 2018 RESULTS</th> <th style="text-align: center;">FY 2019 RESULTS</th> <th style="text-align: center;">AVG</th> <th style="text-align: center;">OVERALL % CHANGE</th> </tr> </thead> <tbody> <tr> <td style="text-align: center;">7.0 <small>2015 TRC BLS Data</small></td> <td style="text-align: center;">6.4 <small>2016 TRC BLS Data</small></td> <td style="text-align: center;">6.5 <small>2017 TRC BLS Data</small></td> <td style="text-align: center;">6.5 <small>2018 TRC BLS Data</small></td> <td style="text-align: center;">6.6</td> <td style="text-align: center;">14% Reduction in TRC</td> </tr> </tbody> </table>	BASELINE	FY 2020 TARGET	7.7 Total Recordable Cases (TRC) <small>(averaged BLS 2009-2012 for NAICS 926120)</small>	2% Reduction in TRC	FY 2016 RESULTS	FY 2017 RESULTS	FY 2018 RESULTS	FY 2019 RESULTS	AVG	OVERALL % CHANGE	7.0 <small>2015 TRC BLS Data</small>	6.4 <small>2016 TRC BLS Data</small>	6.5 <small>2017 TRC BLS Data</small>	6.5 <small>2018 TRC BLS Data</small>	6.6	14% Reduction in TRC
BASELINE	FY 2020 TARGET																
7.7 Total Recordable Cases (TRC) <small>(averaged BLS 2009-2012 for NAICS 926120)</small>	2% Reduction in TRC																
FY 2016 RESULTS	FY 2017 RESULTS	FY 2018 RESULTS	FY 2019 RESULTS	AVG	OVERALL % CHANGE												
7.0 <small>2015 TRC BLS Data</small>	6.4 <small>2016 TRC BLS Data</small>	6.5 <small>2017 TRC BLS Data</small>	6.5 <small>2018 TRC BLS Data</small>	6.6	14% Reduction in TRC												

SUMMARY OF ANNUAL PERFORMANCE GOALS

Annual Performance Goal # 1.5	Reduce the number of worker injuries and illnesses by focusing statewide attention and resources on the most prevalent types of injuries and illnesses in the most hazardous public occupations and workplaces.																
Strategy	<p>Decrease injury and illness rates in state, county and/or local agencies in the specific NAICS segments by two percent by FY 2020.</p> <p>1.5 Water and Sewage Treatment Facilities (NAICS 2213)</p>																
Performance Indicator(s) (including activity, intermediate outcome, and primary outcome measures)	<p>Activity Measure:</p> <ul style="list-style-type: none"> • 26 inspections conducted in targeted NAICS • 1 public-sector consultation visit conducted in targeted NAICS • 75 marketing materials distributed <p>Intermediate Outcome Measures:</p> <ul style="list-style-type: none"> • Each year, track and document targeted NAICS BLS total recordable case data. Evaluate decrease in total recordable cases by 0.4% each year. <p>Primary Outcome Measures:</p> <ul style="list-style-type: none"> • Decrease injury and illness rates (total recordable cases) in state, county and/or local agencies in the specific NAICS segments by 2% by FY 2020. 																
FY 2019 Results	<ul style="list-style-type: none"> • 39 inspections conducted • 2 public-sector consultation visits conducted • 1,351 marketing materials distributed 																
Conclusion	<p>Illinois OSHA met all activity measures for FY 2019.</p> <p>Averaged 2015, 2016, 2017 & 2018 BLS data revealed an 8% reduction in total recordable cases</p> <table border="1" style="margin-left: auto; margin-right: auto; border-collapse: collapse;"> <tr> <td style="text-align: center;">BASELINE</td> <td style="text-align: center;">FY 2020 TARGET</td> </tr> <tr> <td style="text-align: center;">6.2 Total Recordable Cases (TRC) <small>(averaged BLS 2009-2012 for NAICS 2213)</small></td> <td style="text-align: center;">2% Reduction in TRC</td> </tr> </table> <table border="1" style="margin-left: auto; margin-right: auto; border-collapse: collapse; width: 100%;"> <thead> <tr> <th style="text-align: center;">FY 2016 RESULTS</th> <th style="text-align: center;">FY 2017 RESULTS</th> <th style="text-align: center;">FY 2018 RESULTS</th> <th style="text-align: center;">FY 2019 RESULTS</th> <th style="text-align: center;">AVG</th> <th style="text-align: center;">OVERALL % CHANGE</th> </tr> </thead> <tbody> <tr> <td style="text-align: center;">6.2 2015 TRC BLS Data</td> <td style="text-align: center;">5.3 2016 TRC BLS Data</td> <td style="text-align: center;">5.4 2017 TRC BLS Data</td> <td style="text-align: center;">5.8 2018 TRC BLS Data</td> <td style="text-align: center;">5.7</td> <td style="text-align: center;">8% Reduction in TRC</td> </tr> </tbody> </table>	BASELINE	FY 2020 TARGET	6.2 Total Recordable Cases (TRC) <small>(averaged BLS 2009-2012 for NAICS 2213)</small>	2% Reduction in TRC	FY 2016 RESULTS	FY 2017 RESULTS	FY 2018 RESULTS	FY 2019 RESULTS	AVG	OVERALL % CHANGE	6.2 2015 TRC BLS Data	5.3 2016 TRC BLS Data	5.4 2017 TRC BLS Data	5.8 2018 TRC BLS Data	5.7	8% Reduction in TRC
BASELINE	FY 2020 TARGET																
6.2 Total Recordable Cases (TRC) <small>(averaged BLS 2009-2012 for NAICS 2213)</small>	2% Reduction in TRC																
FY 2016 RESULTS	FY 2017 RESULTS	FY 2018 RESULTS	FY 2019 RESULTS	AVG	OVERALL % CHANGE												
6.2 2015 TRC BLS Data	5.3 2016 TRC BLS Data	5.4 2017 TRC BLS Data	5.8 2018 TRC BLS Data	5.7	8% Reduction in TRC												

SUMMARY OF ANNUAL PERFORMANCE GOALS

Strategic Goal #2 To promote safety and health values in public-sector workplaces in Illinois.															
Annual Performance Goal # 2.1	To promote public-sector employer and employee awareness of, commitment to, and active participation in safety and health.														
Strategy	Performance Goal 2.1 2.1 100% of Illinois OSHA activities will include employee involvement.														
Performance Indicator(s) (including activity, intermediate outcome, and primary outcome measures)	Activity Measures: <u>Enforcement</u> <ul style="list-style-type: none"> • 700 inspections conducted • 700 inspections conducted where employees were conferred with <u>Consultation</u> <ul style="list-style-type: none"> • 15 public-sector consultation visits conducted • 15 public-sector consultation visits conducted where employees were conferred with • 3 compliance assistance activities (outreach, seminars, etc.) where employees were targeted/involved Intermediate Outcome Measures: <ul style="list-style-type: none"> • Use OSHA’s OIS database management system to track and verify 100% of Illinois OSHA activities will include employee involvement. Primary Outcome Measures: <ul style="list-style-type: none"> • 100% of Illinois OSHA activities will include employee involvement. 														
FY 2019 Results	<u>Enforcement</u> <ul style="list-style-type: none"> • 241 inspections conducted. • 241 (100%) inspections conducted where employees were consulted with <u>Consultation</u> <ul style="list-style-type: none"> • 27 public-sector visits conducted • 27 (100%) public-sector visits conducted where employees were consulted with • 11 compliance assistance activities where employees were targeted/involved 														
Conclusion	Illinois OSHA met this performance goal for FY 2019. <table border="1" style="margin-left: auto; margin-right: auto;"> <thead> <tr> <th>BASELINE</th> <th>FY 2019 TARGET</th> <th>FY 2019 RESULTS</th> <th>% MET</th> </tr> </thead> <tbody> <tr> <td rowspan="3">100% of Illinois OSHA Enforcement and Consultation activities will include employee involvement.</td> <td style="text-align: center;">241 Inspections conducted</td> <td style="text-align: center;">241 Inspections included employee involvement</td> <td style="text-align: center;">100%</td> </tr> <tr> <td style="text-align: center;">27 Consultations conducted</td> <td style="text-align: center;">27 Consultations included employee involvement</td> <td style="text-align: center;">100%</td> </tr> <tr> <td style="text-align: center;">11 Compliance assistance activities</td> <td style="text-align: center;">11 Compliance assistance activities included employee involvement</td> <td style="text-align: center;">100%</td> </tr> </tbody> </table>	BASELINE	FY 2019 TARGET	FY 2019 RESULTS	% MET	100% of Illinois OSHA Enforcement and Consultation activities will include employee involvement.	241 Inspections conducted	241 Inspections included employee involvement	100%	27 Consultations conducted	27 Consultations included employee involvement	100%	11 Compliance assistance activities	11 Compliance assistance activities included employee involvement	100%
BASELINE	FY 2019 TARGET	FY 2019 RESULTS	% MET												
100% of Illinois OSHA Enforcement and Consultation activities will include employee involvement.	241 Inspections conducted	241 Inspections included employee involvement	100%												
	27 Consultations conducted	27 Consultations included employee involvement	100%												
	11 Compliance assistance activities	11 Compliance assistance activities included employee involvement	100%												

SUMMARY OF ANNUAL PERFORMANCE GOALS

Annual Performance Goal # 2.2	To promote public-sector employer and employee awareness of, commitment to, and active participation in safety and health.								
Strategy	Performance Goal 2.2 2.2 Award Safety and Health Achievement Recognition (SHARP) to five new public-sector worksites by FY 2020. Recognize other outstanding contributions to worker safety and health.								
Performance Indicator(s) (including activity, intermediate outcome, and primary outcome measures)	Activity Measures: <ul style="list-style-type: none"> • One new public-sector Safety and Health Achievement Recognitions awarded Intermediate Outcome Measures: <ul style="list-style-type: none"> • Two new public-sector Safety and Health Achievement Recognitions awarded in FY 2019 & FY 2020. Primary Outcome Measures: <ul style="list-style-type: none"> • Award Safety and Health Achievement Recognitions to five new public-sector worksites by 2020. 								
FY 2019 Results	One new public-sector SHARP were awarded.								
Conclusion	Illinois OSHA met this performance goal for FY 2019. <table border="1" style="margin-left: auto; margin-right: auto;"> <thead> <tr> <th style="text-align: left;">BASELINE</th> <th style="text-align: center;">FY 2019 TARGET</th> <th style="text-align: center;">FY 2019 RESULTS</th> <th style="text-align: center;">% MET</th> </tr> </thead> <tbody> <tr> <td style="text-align: left;">Award Safety and Health Achievement Recognition (SHARP) to one new public-sector worksites per year.</td> <td style="text-align: center;">1</td> <td style="text-align: center;">1</td> <td style="text-align: center;">100%</td> </tr> </tbody> </table>	BASELINE	FY 2019 TARGET	FY 2019 RESULTS	% MET	Award Safety and Health Achievement Recognition (SHARP) to one new public-sector worksites per year.	1	1	100%
BASELINE	FY 2019 TARGET	FY 2019 RESULTS	% MET						
Award Safety and Health Achievement Recognition (SHARP) to one new public-sector worksites per year.	1	1	100%						

SUMMARY OF ANNUAL PERFORMANCE GOALS

Annual Performance Goal # 2.3	To promote public-sector employer and employee awareness of, commitment to, and active participation in safety and health.										
Strategy	Performance Goal 2.3 2.3 100% of Illinois OSHA’s public-sector initial consultation visits will include site-specific recommendations to improve the safety and health program management system at that facility.										
Performance Indicator(s) (including activity, intermediate outcome, and primary outcome measures)	Activity Measures: Consultation Activities <ul style="list-style-type: none"> • 15 public-sector consultation visits conducted will include site specific recommendations to improve safety and health program management systems Intermediate Outcome Measures: <ul style="list-style-type: none"> • Use OSHA’s OIS Database Management system to track and verify 100% of Illinois OSHA’s public-sector consultation visits will include site-specific recommendations to improve the safety and health program management system at that facility. Primary Outcome Measures: <ul style="list-style-type: none"> • 100% of Illinois OSHA’s public-sector consultation visits will include site-specific recommendations to improve the safety and health program management system at that facility. 										
FY 2019 Results	<ul style="list-style-type: none"> • 27 public-sector consultation visits conducted • 100% of public-sector initial consultation visits conducted included site-specific recommendations to improve safety and health program management systems. 										
Conclusion	Illinois OSHA met this performance goal for FY 2019. <table border="1" style="margin-left: auto; margin-right: auto;"> <thead> <tr> <th style="text-align: center;">BASELINE</th> <th style="text-align: center;">FY 2019 TARGET</th> <th style="text-align: center;">FY 2019 RESULTS</th> <th style="text-align: center;">% MET</th> </tr> </thead> <tbody> <tr> <td style="text-align: center;">100% of public-sector consultation visits conducted included site-specific recommendations to improve safety and health program management.</td> <td style="text-align: center;">27 consultation visits conducted</td> <td style="text-align: center;">27 consultation visits included site-specific recommendations</td> <td style="text-align: center;">100%</td> </tr> </tbody> </table>			BASELINE	FY 2019 TARGET	FY 2019 RESULTS	% MET	100% of public-sector consultation visits conducted included site-specific recommendations to improve safety and health program management.	27 consultation visits conducted	27 consultation visits included site-specific recommendations	100%
BASELINE	FY 2019 TARGET	FY 2019 RESULTS	% MET								
100% of public-sector consultation visits conducted included site-specific recommendations to improve safety and health program management.	27 consultation visits conducted	27 consultation visits included site-specific recommendations	100%								

SUMMARY OF ANNUAL PERFORMANCE GOALS

Annual Performance Goal # 2.4	To promote public-sector employer and employee awareness of, commitment to, and active participation in safety and health.										
Strategy	Performance Goal 2.4 2.4 Conduct compliance assistance activities for high-hazard industry organizations/groups concerning the hazards of relevant National Emphasis Programs (NEPs) and OSHA Directives and promoting Illinois OSHA’s On-Site Consultation services.										
Performance Indicator(s) (including activity, intermediate outcome, and primary outcome measures)	Activity Measures: <u>Consultation Activities</u> <ul style="list-style-type: none"> • Number of activities for high-hazard industry groups where NEPs and OSHA Directives and public-sector consultation services are promoted including 488, 926120, 2213, 92216. Intermediate Outcome Measures: <ul style="list-style-type: none"> • Use OSHA’s OIS database management system to track compliance assistance activities for high-hazard industry organizations/groups concerning the hazards of relevant NEPs and OSHA Directives and promoting Illinois OSHA’s On-Site Consultation services. Increase compliance assistance activities by a minimum of one each year. Primary Outcome Measures: <ul style="list-style-type: none"> • Conduct compliance assistance activities for high-hazard industry organizations/groups concerning the hazards of relevant NEPs and OSHA Directives and promoting Illinois OSHA’s On-Site Consultation services. Increase compliance assistance activities by a minimum of one each year for a total of 12 activities by 2020. 										
FY 2019 Results	Ten compliance assistance activities performed (see detailed list on page 20).										
Conclusion	Illinois OSHA met this performance goal for FY 2019. <table border="1" style="margin-left: auto; margin-right: auto;"> <thead> <tr> <th style="text-align: left;">BASELINE</th> <th style="text-align: center;">FY 2019 TARGET</th> <th style="text-align: center;">FY 2019 RESULTS</th> <th style="text-align: center;">% MET</th> </tr> </thead> <tbody> <tr> <td style="text-align: left;"> Illinois OSHA will use FY 2015 as a baseline and will increase compliance assistance activities by a minimum of one each year for a total of 12 by FY 2020. FY 2015 = 7 FY 2016 = 8 FY 2017 = 9 FY 2018 = 10 FY 2019 = 11 </td> <td style="text-align: center; vertical-align: middle;">11</td> <td style="text-align: center; vertical-align: middle;">11</td> <td style="text-align: center; vertical-align: middle;">100%</td> </tr> </tbody> </table>			BASELINE	FY 2019 TARGET	FY 2019 RESULTS	% MET	Illinois OSHA will use FY 2015 as a baseline and will increase compliance assistance activities by a minimum of one each year for a total of 12 by FY 2020. FY 2015 = 7 FY 2016 = 8 FY 2017 = 9 FY 2018 = 10 FY 2019 = 11	11	11	100%
BASELINE	FY 2019 TARGET	FY 2019 RESULTS	% MET								
Illinois OSHA will use FY 2015 as a baseline and will increase compliance assistance activities by a minimum of one each year for a total of 12 by FY 2020. FY 2015 = 7 FY 2016 = 8 FY 2017 = 9 FY 2018 = 10 FY 2019 = 11	11	11	100%								

SUMMARY OF ANNUAL PERFORMANCE GOALS

<p>Strategic Goal #3 To generate public confidence through excellence in the development and delivery of Illinois OSHA’s programs and services.</p>	
<p>Annual Performance Goal # 3.1</p>	<p>Respond to legal mandates (adoptions) so that Illinois public-sector workers are provided full protection under the Occupational Safety and Health Act. Increase and improve the number of frontline contacts with appropriate agencies, organizations and services that involve the public sector.</p>
<p>Strategy</p>	<p>Performance Goal 3.1</p> <p>3.1 Investigate 100% of events that result in the death or in-patient hospitalization of one or more employees or an employee’s amputation or an employee’s loss of an eye, as a result of a work-related incident of a public-sector employee within 24 hours.</p>
<p>Performance Indicator(s) (including activity, intermediate outcome, and primary outcome measures)</p>	<p>Activity Measures:</p> <ul style="list-style-type: none"> • Number of fatalities, in-patient hospitalizations, amputations, or loss of eye(s) as a result of a work-related incident. • Number of fatalities, in-patient hospitalizations, amputations, or loss of eye(s) as a result of a work-related incidents investigated within one working day of notification. • Number of fatalities, in-patient hospitalizations, amputations, or loss of eye(s) as a result of a work-related incidents that are under NEPs. <p>Intermediate Outcome Measures:</p> <ul style="list-style-type: none"> • Use OSHA’s OIS database management system to track 100% of events that result in the death or in-patient hospitalization of one or more employees or an employee’s amputation or an employee’s loss of an eye, as a result of a work-related incident of a public-sector employee are investigated within 24 hours. <p>Primary Outcome Measures:</p> <ul style="list-style-type: none"> • Investigate 100% of events that result in the death or in-patient hospitalization of one or more employees or an employee’s amputation or an employee’s loss of an eye, as a result of a work-related incident of a public-sector employee within 24 hours.
<p>FY 2019 Results</p>	<p>Through a partnership with the Illinois Emergency Management Agency (IEMA), Illinois OSHA offers a 24-hour, seven days per week answering service which affords Illinois OSHA the ability to respond expeditiously to fatal events or catastrophes at all times.</p> <ul style="list-style-type: none"> • 30 fatalities/catastrophes received • 30 fatalities/catastrophes investigated within one working day of notification.

SUMMARY OF ANNUAL PERFORMANCE GOALS

Conclusion	Illinois OSHA met this performance goal for FY 2019.			
	BASELINE	FY 2019 TARGET	FY 2019 RESULTS	% MET
	Initiate inspections of fatal incidents and catastrophes within one working day of notification.	30 FAT/CATs received	30 FAT/CATs investigated within one day.	100% Within one working day

SUMMARY OF ANNUAL PERFORMANCE GOALS

<p>Annual Performance Goal # 3.2</p>	<p>Respond to legal mandates (adoptions) so that Illinois public-sector workers are provided full protection under the Occupational Safety and Health Act. Increase and improve the number of frontline contacts with appropriate agencies, organizations and services that involve the public sector.</p>
<p>Strategy</p>	<p>Performance Goal 3.2</p> <p>3.2 A. Safety – Initiate 100% of safety complaint inspections within five days of notification.</p> <p>B. Health – Initiate 95% of health complaint inspections within five days of notification, excluding indoor air quality and sanitation issues.</p>
<p>Performance Indicator(s) (including activity, intermediate outcome, and primary outcome measures)</p>	<p>Activity Measures</p> <p><u>Safety</u></p> <ul style="list-style-type: none"> • Number of safety complaints received • Number of safety complaint inspections initiated within five days • Number of safety complaints under NEPs <p><u>Health</u></p> <ul style="list-style-type: none"> • Number of health complaints received (non-indoor air quality or sanitation) • Number of health complaint inspections (non-indoor air quality or sanitation) initiated within five days. <p>Intermediate Outcome Measures:</p> <ul style="list-style-type: none"> • Use OSHA’s OIS database management system to track 100% of safety complaint inspections and 95% of health complaint inspections are initiated within five days of notification. <p>Primary Outcome Measures:</p> <ul style="list-style-type: none"> • Safety – Initiate 100% of safety complaint inspections within five days of notification. • Health – Initiate 95% of health complaint inspections within five days of notification, excluding indoor air quality and sanitation issues.
<p>FY 2019 Results</p>	<p>In FY 2019, a total of 195 safety and health complaints were received, 37 of them warranted an inspection.</p> <p><u>Safety</u></p> <ul style="list-style-type: none"> • 83 safety complaints received • 21 of the 83 safety complaints received warranted an inspection. In FY 2019 it took an average of 5 days to initiate an inspection. <p><u>Health</u></p> <ul style="list-style-type: none"> • 112 health complaints received • 16 of the 112 health complaints received warranted an inspection. In FY 2019 it took an average of 5.27 days to initiate an inspection.

SUMMARY OF ANNUAL PERFORMANCE GOALS

Conclusion	Illinois OSHA met this performance goal for FY 2019.			
	BASELINE	FY 2019 TARGET	FY 2019 RESULTS	% MET
	Safety – Initiate 100% of safety complaint inspections within five days of notification.	21 Safety complaints received	21 Investigated within an average of 5 days.	100% Investigated within five days
	Health – Initiate 95% of health complaint inspections within five days of notification, excluding indoor air quality and sanitation issues.	16 Health complaints received	16 Investigated within an average of 5.27 days	95% Investigated within five days

SUMMARY OF ANNUAL PERFORMANCE GOALS

<p>Annual Performance Goal # 3.3</p>	<p>Respond to legal mandates (adoptions) so that Illinois public-sector workers are provided full protection under the Occupational Safety and Health Act. Increase and improve the number of frontline contacts with appropriate agencies, organizations and services that involve the public sector.</p>								
<p>Strategy</p>	<p>Performance Goal 3.3</p> <p>3.3 To survey customer satisfaction rates for public-sector consultation visits and ensure that 90% of the services are rated four or higher on a scale of one to five, with five being the most effective. This shows the effectiveness of the program and services from the consumer perspective.</p>								
<p>Performance Indicator(s) (including activity, intermediate outcome, and primary outcome measures)</p>	<p>Activity Measures</p> <ul style="list-style-type: none"> • Number of public-sector consultation visits conducted • Number of survey responses received where employer rated the consultation visit as highly effective (score of four or higher, on a scale of one to five with five being the most effective). <p>Intermediate Outcome Measures:</p> <ul style="list-style-type: none"> • Consultation Supervisors will send public-sector employers a survey after each consultation visit. All surveys received will be reviewed by the Supervisor to verify a score of four or higher, on a scale of one to five with five being the most effective has been achieved. <p>Primary Outcome Measures:</p> <ul style="list-style-type: none"> • To survey customer satisfaction rates for consultation visits in the public sector and ensure that 90% of the services are rated four or higher on a scale of one to five, with five being the most effective. This shows the effectiveness of the program and services from the consumer perspective. 								
<p>FY 2019 Results</p>	<ul style="list-style-type: none"> • 27 public-sector consultation visits conducted • 27 public-sector surveys sent. Five were returned and all had a score of four or higher 								
<p>Conclusion</p>	<p>Illinois OSHA met this performance goal for FY 2019.</p> <table border="1" data-bbox="527 1444 1380 1717" style="margin-left: auto; margin-right: auto;"> <thead> <tr> <th style="text-align: center;">BASELINE</th> <th style="text-align: center;">FY 2019 TARGET</th> <th style="text-align: center;">FY 2019 RESULTS</th> <th style="text-align: center;">% MET</th> </tr> </thead> <tbody> <tr> <td style="text-align: center;">Customer satisfaction surveys for consultation visits in the public sector are rated four or higher.</td> <td style="text-align: center;">5 consultation surveys received</td> <td style="text-align: center;">5 scored four or higher</td> <td style="text-align: center;">100% scored four or higher</td> </tr> </tbody> </table>	BASELINE	FY 2019 TARGET	FY 2019 RESULTS	% MET	Customer satisfaction surveys for consultation visits in the public sector are rated four or higher.	5 consultation surveys received	5 scored four or higher	100% scored four or higher
BASELINE	FY 2019 TARGET	FY 2019 RESULTS	% MET						
Customer satisfaction surveys for consultation visits in the public sector are rated four or higher.	5 consultation surveys received	5 scored four or higher	100% scored four or higher						

SUMMARY OF ANNUAL PERFORMANCE GOALS

<p>Annual Performance Goal # 3.4</p>	<p>Respond to legal mandates (adoptions) so that Illinois public-sector-workers are provided full protection under the Occupational Safety and Health Act. Increase and improve the number of frontline contacts with appropriate agencies, organizations and services that involve the public sector.</p>								
<p>Strategy</p>	<p>Performance Goal 3.4</p> <p>3.4 Each year, increase the number of compliance assistance activities (i.e. direct mailings, advertising, newsletters, etc.) conducted or distributed in the public sector.</p>								
<p>Performance Indicator(s) (including activity, intermediate outcome, and primary outcome measures)</p>	<p>Activity Measures</p> <ul style="list-style-type: none"> • Number of compliance assistance activities conducted/distributed (i.e. direct mailings, hazard alerts, newsletters) <p>Intermediate Outcome Measures:</p> <ul style="list-style-type: none"> • Use OSHA’s OIS database management system to track compliance assistance activities. Increase compliance assistance activities by a minimum of one each year. <p>Primary Outcome Measures:</p> <ul style="list-style-type: none"> • Each year, maintain and/or exceed the number of compliance assistance activities (i.e. direct mailings, advertising, newsletters, etc.) conducted or distributed in the public sector. Increase compliance assistance activities by a minimum of one each year for a total of 12 activities by FY 2020. 								
<p>FY 2019 Results</p>	<p>Ten compliance assistance activities performed (see detailed list on page 20).</p>								
<p>Conclusion</p>	<p>Illinois OSHA met this performance goal for FY 2019.</p> <table border="1" data-bbox="534 1314 1390 1707"> <thead> <tr> <th data-bbox="534 1314 870 1377">BASELINE</th> <th data-bbox="870 1314 1027 1377">FY 2019 TARGET</th> <th data-bbox="1027 1314 1183 1377">FY 2019 RESULTS</th> <th data-bbox="1183 1314 1390 1377">% MET</th> </tr> </thead> <tbody> <tr> <td data-bbox="534 1377 870 1707"> Illinois OSHA will use FY 2015 as a baseline and will increase compliance assistance activities by a minimum of one each year for a total of 12 by FY 2020. FY 2015 = 7 FY 2016 = 8 FY 2017 = 9 FY 2018 = 10 FY 2019 = 11 </td> <td data-bbox="870 1377 1027 1707" style="text-align: center;"> 11 compliance assistance activities </td> <td data-bbox="1027 1377 1183 1707" style="text-align: center;"> 11 compliance assistance activities </td> <td data-bbox="1183 1377 1390 1707" style="text-align: center;"> 100% </td> </tr> </tbody> </table>	BASELINE	FY 2019 TARGET	FY 2019 RESULTS	% MET	Illinois OSHA will use FY 2015 as a baseline and will increase compliance assistance activities by a minimum of one each year for a total of 12 by FY 2020. FY 2015 = 7 FY 2016 = 8 FY 2017 = 9 FY 2018 = 10 FY 2019 = 11	11 compliance assistance activities	11 compliance assistance activities	100%
BASELINE	FY 2019 TARGET	FY 2019 RESULTS	% MET						
Illinois OSHA will use FY 2015 as a baseline and will increase compliance assistance activities by a minimum of one each year for a total of 12 by FY 2020. FY 2015 = 7 FY 2016 = 8 FY 2017 = 9 FY 2018 = 10 FY 2019 = 11	11 compliance assistance activities	11 compliance assistance activities	100%						

PROGRESS TOWARD STRATEGIC PLAN ACCOMPLISHMENTS

The strategic plan identifies three fundamental goals to reduce workplace injuries, illnesses and fatalities in Illinois public-sector worksites.

- Improve workplace safety and health for all public-sector employees as evidenced by fewer hazards, reduced exposures and fewer injuries, illnesses and deaths.
- Promote safety and health values in Illinois public-sector workplaces.
- Generate public confidence through excellence in the development and delivery of Illinois OSHA programs and services.

The FY 2019 activities that were conducted toward meeting our strategic plan goals are described below.

Strategic Efforts to Achieve Goal #1:

Improve workplace safety and health for all public-sector employees as evidenced by fewer hazards, reduced exposures and fewer injuries, illnesses and deaths.

- Illinois OSHA's strategy for improving workplace safety and health for all public-sector employees as evidenced by fewer hazards, reduced exposures and fewer injuries, illnesses and deaths is based on addressing specific areas that have the greatest impact on the overall rates. The areas of emphasis in the current Site-Specific Targeting (SST) plan include:
 - State Support Activities for Transportation (NAICS 488)
 - State Nursing and Residential Care Facilities (NAICS 623)
 - Local Fire Protection (NAICS 92216)
 - Departments of Public Works (NAICS 926120)
 - Water and Sewage Treatment Facilities (NAICS 2213)

Illinois OSHA uses a high-hazard inspection targeting system based on OSHA Instruction CPL 02-00-025, *Scheduling System for Programmed Inspections* (January 4, 1995), which is based on Bureau of Labor Statistics (BLS) injury/illness rate data. The BLS data and the SST plan helped Illinois OSHA meet activity measures and achieve its goal of reducing the number of injuries and illnesses that occur at public-sector employer establishments by directing enforcement resources to those establishments where the highest rate of injury and illness has occurred.

- Illinois OSHA maintained a strong enforcement presence as an effective deterrent for employers who fail to meet their safety and health responsibilities by conducting comprehensive inspections at locations identified through a Programmed Planned Inspection (PPI) list, based off the SST plan.
- Inspectors encouraged public-sector employers to use consultation services to ensure they are performing these tasks in a safe and compliant manner.
- Outreach materials were distributed, and compliance assistance conducted to assist with abatement and to raise awareness levels of hazardous conditions in the workplace.
- Illinois OSHA aligned with the Illinois Fire Service Institute and Federal OSHA to promote the "Stand-Up for Grain Safety Week" from March 25-29, 2019.
- Averaged 2015, 2016, 2017 and 2018 BLS data revealed IL OSHA is on track to decrease injury and illness rates (total recordable cases) in state, county and/or local agencies in the specific NAICS segments by 2% by FY 2020.

Strategic Efforts to Achieve Goal #2:

To promote safety and health values in Illinois public-sector workplaces.

- An employee representative participated 100% of the time at all inspections and consultation visits.
- Public-sector SHARP was promoted at all public-sector consultation visits.
- 100% of public-sector employers participating in an initial Illinois OSHA On-Site Consultation visit were provided with site-specific recommendations to improve their safety and health program management system.
- In FY 2019, Illinois OSHA performed 11 compliance assistance activities.
 - January 28, 2019 Southern Illinois Occupational Safety and Health (SIOOSH) Day: program promotion as exhibitor.
 - February 8, 2019 notified all State and Local Government agencies reminding them of the Electronic Reporting Requirements.
 - February 27, 2019 Downstate Illinois Occupational Safety and Health (DIOOSH) Day: program promotion as exhibitor and presented Robert Luginbuhl, from Oberlander Electric, Peoria, IL with the 8th Annual Governor's Safety and Health Award for an individual.
 - March 25, 2019 Grain Stand Down with Illinois Fire Service Institute and Federal OSHA.
 - April 9-11, 2019 Trenching Safety Conference.
 - April 26, 2019 Decatur Trades & Labor Assembly, AFL-CIO Workers Memorial Day 2019
 - May 20, 2019 Mailed Fire Department Outreach Letter to 37 Will & Kankakee County Fired Departments and Fire Districts.
 - June 28, 2019 Fire Districts Conference, IL OSHA Presented" Who's on First & What Rules Apply"

- July 9, 2019 Workplace Violence press release; <https://www2.illinois.gov/idol/News/Documents/WorkplaceViolence.pdf>
- July 24, 2019 OSHA Poster press release; <http://wlds.com/news/illinois-employers-required-to-keep-osh-poster-displayed-in-worksites/>
- September 18, 2019 Chicagoland Safety Conference: program promotion as exhibitor.

Strategic Efforts to Achieve Goal #3

Generate public confidence through excellence in the development and delivery of Illinois OSHA programs and services.

- Through a partnership with the Illinois Emergency Management Agency (IEMA), Illinois OSHA offers a 24-hour, seven days per week answering service which affords Illinois OSHA the ability to respond to fatal events or catastrophes expeditiously at any time.
- Using the OSHA Information System (OIS), Illinois OSHA tracks all complaints and referrals to ensure timely assignment and prioritization of imminent danger situations.
- Illinois OSHA public-sector consultation surveys track customer satisfaction and ensure that 90% of the services are rated four or higher on a scale of one to five with five being the most effective.
- On February 8, 2019, Illinois OSHA notified all State and Local Government agencies reminding them of the Electronic Reporting Requirements.

MANDATED ACTIVITES

Activities mandated under the OSHA state plan program are considered core elements of Illinois OSHA’s occupational safety and health program. The core elements outlined in the OSH Act (29 CFR 1902) and 29 CFR 1956 for public-sector-only plans are as follows:

- Prohibition against advanced notice.
- Employee access to hazard and exposure information.
- Safeguards to protect employer trade secrets.
- Employer recordkeeping.
- Legal procedures for compulsory process and right of entry.
- Posting of employee protections and rights.
- Right of employee representative to participate in walk-around.
- Right of an employee to review decision not to inspect (following a complaint).

Mandated activities are tracked on a quarterly basis using the State Activities Measures (SAMM) Report in OIS which compares state activity data to an established reference point. (See FY 2019 SAMM Report)

23(g) State Plans Projected Program Activities

	FY 2019 Projections*		FY 2019 Actuals	
	Safety	Health	Safety	Health
Public-Sector Inspections	500	200	224	17
Public-Sector Consultations	13	7	18	9

**This assumes a fully staffed and fully trained staff, with 40 available work weeks in the year, and an average of 1.25 inspections per week per Safety/Health Inspector and is based on previous work experience and history.*

In FY 2019 Illinois OSHA filled three Public Safety Inspector and one Regional Enforcement Manager positions which increased program activities and surpassed FY 2018 actuals by 67 inspections.

23(g) Compliance Assistance

	FY 2019 Projections		FY 2019 Actuals	
	New	Total	New	Total
SHARP participants-Public Sector	1	1	1	1
Outreach Participants		**8,000		9,064

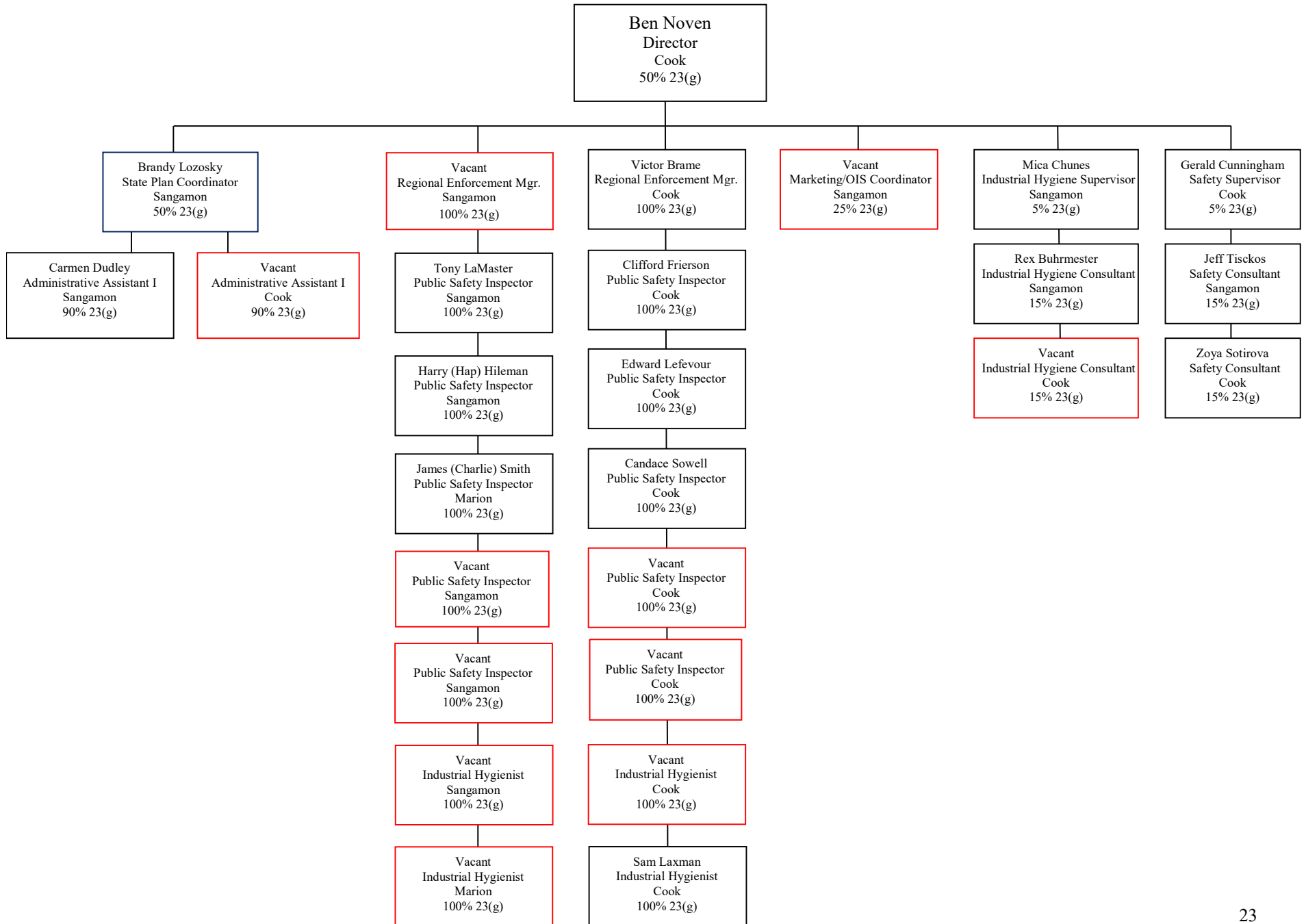
***Outreach participants are the total number of trainees/participants anticipated to be affected by state outreach activities during the period, such as formal training, workshops, seminars, speeches, conferences, and informal worksite training.*

Illinois OSHA met 34% of the fully-staffed and fully-trained year-to-date projection of 700.

The Illinois On-Site Consultation Project exceeded the projected public-sector consultation goal of 15 consultations by performing 27 consultations.

Illinois OSHA’s outreach activities in FY 2019 such as formal training, workshops, seminars, speeches, conferences and informal worksite training resulted in 9,064 trainee/participants.

23(g) ORGANIZATIONAL CHART



FY 2019 SAMM REPORT
 ILLINOIS OSHA MANDATED ACTIVITIES
 OCTOBER 1, 2018 – SEPTEMBER 30, 2019

SAMM #	Measure	RIDs Selected	All State Plan RIDs	All Federal RIDs	National	
1A	Time to Initiate Complaint Inspections STATE formula (Average Number of Work Days to Initiate Complaint Inspections)	195	66608	60338	126,946	
		5.27	7.25	7.79	7.50	
		37	9188	7744	16,926	
1B	Time to Initiate Complaint Inspections FEDERAL formula (Average Number of Work Days to Initiate Complaint Inspections)	89	40,721	21,227	61,948	
		2.41	4.43	2.74	3.66	
		37	9,188	7,744	16,926	
2A	Time to Initiate Complaint Investigations STATE formula (Average Number of Work Days to Initiate Complaint Investigations)	247	87064	13655	100,719	
		2.45	5.10	0.74	2.84	
		101	17058	18421	35,479	
2B	Time to Initiate Complaint Investigations FEDERAL formula (Average Number of Work Days to Initiate Complaint Investigations)	53	34,530	3,668	38,198	
		0.52	2.02	0.20	1.08	
		101	17,058	18,421	35,479	
3	Timely Response to Imminent Danger Complaints and Referrals (Percent of Complaints and Referrals of Imminent Danger Responded to within 1 Day)	1	777	600	1,377	
		100.00%	98.60%	95.69%	97.31%	
		1	788	627	1,415	
4	Number of Denials where entry not obtained	0	1	6	7	
5	Average Number of Violations per Inspection with Violations by Violation Type	SWRU	404	45836	42109	87,945
			2.24	1.69	1.89	1.779650727
			180	27169	22248	49,417
		OTS	37	38301	8420	46,721
			0.21	1.41	0.38	0.945443876
			180	27169	22248	49,417
6	Percent of Total Inspections in Public Sector	241	5,045	32	5,077	
		100.00%	12.06%	0.10%	6.75%	
		241	41,849	33,401	75,250	
7	Inspections	Safety	224	32,554	27,890	60,444
		Health	17	9,295	5,511	14,806

FY 2019 SAMM REPORT
 ILLINOIS OSHA MANDATED ACTIVITIES
 OCTOBER 1, 2018 – SEPTEMBER 30, 2019

8	Average Current Penalty per Serious Violation (Private Sector)	Total (1 to greater than 250 Employees)	\$0.00	\$79,004,836.25	\$136,381,544.68	\$215,386,380.93
			\$0.00	\$2,352.10	\$3,813.06	\$3,105.52
			0	33,589	35,767	69,356
		a. 1-25 Employees	\$0.00	\$27,855,890.40	\$58,941,762.86	\$86,797,653.26
			\$0.00	\$1,372.21	\$2,580.19	\$2,011.81
			0	20,300	22,844	43,144
		b. 26-100 Employees	\$0.00	\$17,221,156.55	\$29,080,525.83	\$46,301,682.38
			\$0.00	\$2,685.77	\$4,697.98	\$3,674.15
			0	6,412	6,190	12,602
		c. 101-250 Employees	\$0.00	\$12,066,771.15	\$16,337,763.33	\$28,404,534.48
			\$0.00	\$4,588.13	\$6,252.49	\$5,417.61
			0	2,630	2,613	5,243
d. Greater than 250 Employees	\$0.00	\$21,861,018.15	\$32,021,492.66	\$53,882,510.81		
	\$0.00	\$5,147.40	\$7,772.21	\$6,439.88		
	0	4,247	4,120	8,367		
9	Percent In Compliance	Safety	56	9,195	6,420	15,615
			27.05%	32.51%	27.54%	30.27%
			207	28,284	23,309	51,593
		Health	9	2,814	1,426	4,240
			56.25%	36.83%	32.93%	35.42%
			16	7,640	4,330	11,970
10	Percent of Work Related Fatalities Responded to in 1 Work Day	5	627	857	1,484	
		100.00%	97.06%	98.73%	98.08%	
		5	646	868	1,513	

FY 2019 SAMM REPORT
 ILLINOIS OSHA MANDATED ACTIVITIES
 OCTOBER 1, 2018 – SEPTEMBER 30, 2019

11	Average Lapse Time	Safety	9,352	1,077,495	952,209	2,029,704
			55.34	49.45	49.25	49.35330448
			169	21,791	19,335	41,126
		Health	587	333,765	220,096	553,861
			58.70	58.03	62.44	59.70259782
			10	5,752	3,525	9,277
12	Penalty Retention Percent Penalty Retained	\$10,500.00	\$75,931,485.19	\$154,534,025.22	\$230,465,510.41	
		100.00%	74.24%	65.36%	68.04%	
		\$10,500.00	\$102,279,012.25	\$236,419,857.10	\$338,698,869.35	
13	Percent of Initial Inspections with Employee Walk around Representation or Employee Interview	241	41,331	32,437	73,768	
		100.00%	98.76%	97.11%	98.03%	
		241	41,849	33,401	75,250	

ADJUSTMENTS

Deobligation

The program deobligated \$661,000 during the FY 2019 grant. The deobligation was timely and there were no lapsed funds.