

Tivoli Mfg. Ltd.

Howfield Lane, Chartham, Canterbury, Kent, England
Tel: (1227) 731156 Fax: (1227) 731137

Safety Bulletin

Bulletin No: SOSA019

Ride Type: Spin Out

(aka. The Claw, The Maelstrom, El Nino)

Date: July 27, 2017

Page: 1

Rides Included: All Rides

Pages: 1 of 5

Parts supplied: N/A

Purpose: Shut Down and inspection of seat tube to support arm weldment

Recently a KMG B.V. Fireball had a catastrophic failure of the connection where the seat support arm is connected to the seat support tube of the vehicle. Not all details are known at this time. The construction of the Fireball seat is the same design as the Spin Out vehicle (also designed By KMG B.V.). KMG B.V. has ordered the shutdown of all affected Fireball and Spin out type ride while the incident is under investigation.

In conjunction with KMG B.V., Tivoli is also requiring the shut down on all Spin Out (El Niño, Maelstrom, The Claw) Rides while KMG B.V. Completes their investigation

During this investigation all Spin Out rides manufactured by Tivoli Enterprises Ltd. are now subject to an inspection of the areas surrounding this attachment. See attached Drawing.

This inspection applies to both type of vehicle attachment, 10 bolt flange and 2 pin connections.

All welds and surrounding area within 6" of weld should be cleaned of paint and tested by magnetic particle NDT procedure.

Additionally an ultra sound test of the wall thickness of the seat support arm and seat tube in the area around the arm support tube area is required.

Drawings of these components are attached indicating material size and wall thickness are attached to this bulletin.

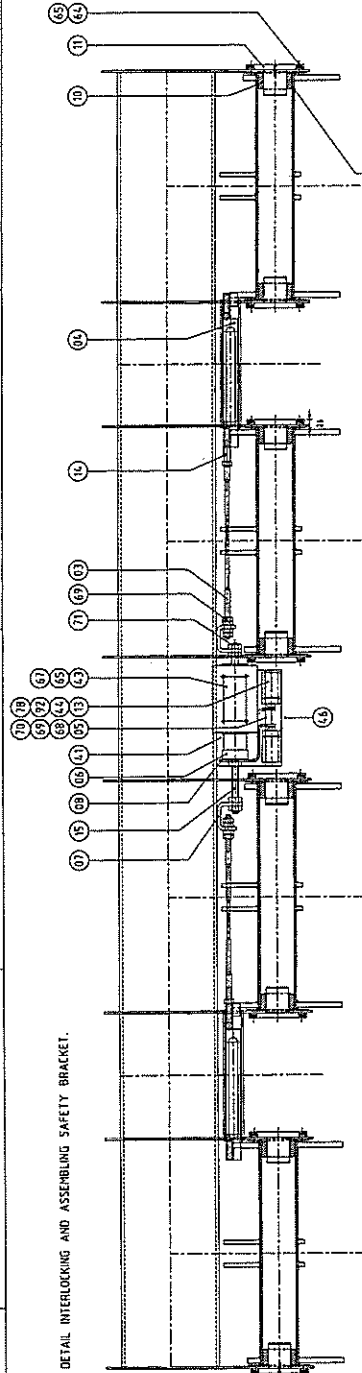
A visual inspection of the complete vehicle frame should be completed.

Inspections must be done by third party inspection service capable of providing a certificate of inspection.

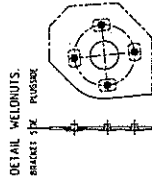
All Tests should be reported to Tivoli Mfg. Ltd. or it's US representative WorldRide Service & Supply Inc. @ 817-641-5045, Fax: 817-645-9109 or email Worldride@sbcglobal.net.

Tivoli Mfg. Ltd.

DETAIL INTERLOCKING AND ASSEMBLING SAFETY BRACKET.

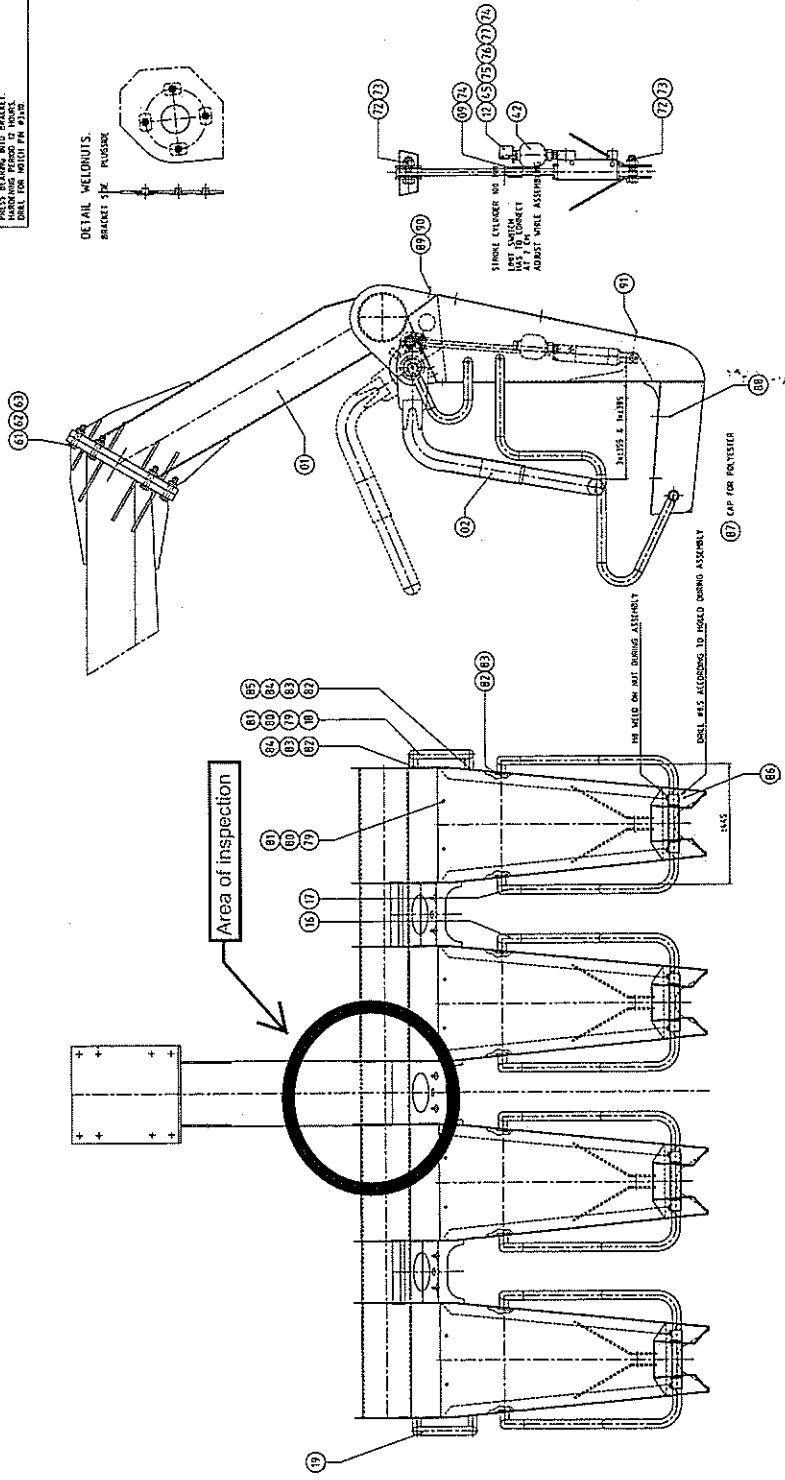
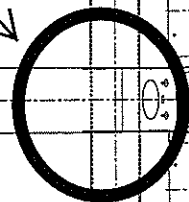


USE MARKING FOR SAFETY BRACKET.
 POSITION SHOWN ON DRAWING.
 SPRAY LOCITE ACTIVATOR FOR OILING SURFACE AND WAIT UNTIL VAPORIZED.
 APPLY LOCITE TO THE SURFACE OF THE BRACKET.
 APPLY LOCITE TO THE SURFACE OF THE BRACKET.
 MARK FOR MOUNTING PIN 41-08.



DETAIL WELDMENTS.
 BRACKET - PIN NUTS

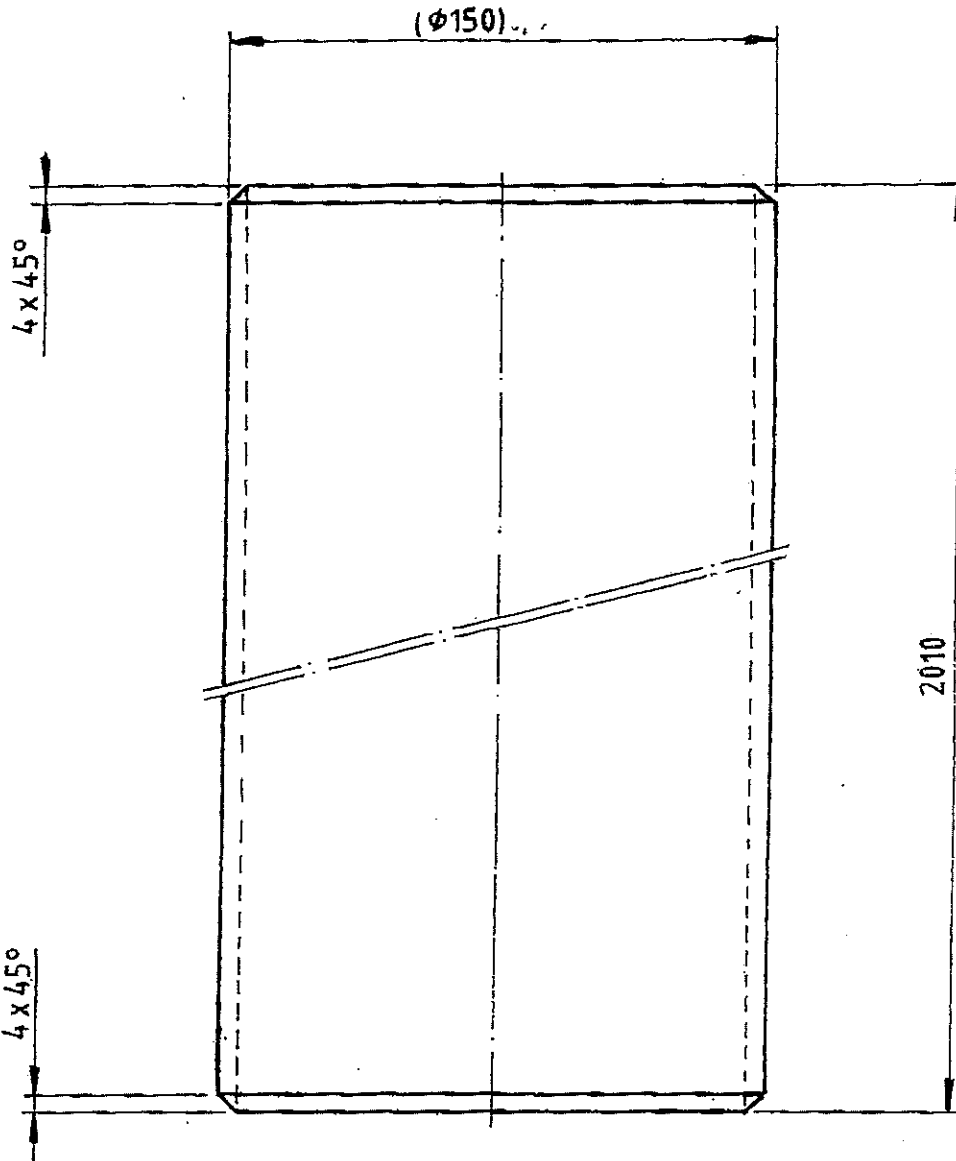
Area of inspection



NO.	DESCRIPTION	QTY.	UNIT	REMARKS
10	BRACKET	1	PC	
11	HANDLE	1	PC	
12	CONTROL LEVER	1	PC	
13	SPRING	1	PC	
14	NUT	1	PC	
15	PIN	1	PC	
16	WASHER	1	PC	
17	WASHER	1	PC	
18	WASHER	1	PC	
19	WASHER	1	PC	
20	WASHER	1	PC	
21	WASHER	1	PC	
22	WASHER	1	PC	
23	WASHER	1	PC	
24	WASHER	1	PC	
25	WASHER	1	PC	
26	WASHER	1	PC	
27	WASHER	1	PC	
28	WASHER	1	PC	
29	WASHER	1	PC	
30	WASHER	1	PC	
31	WASHER	1	PC	
32	WASHER	1	PC	
33	WASHER	1	PC	
34	WASHER	1	PC	
35	WASHER	1	PC	
36	WASHER	1	PC	
37	WASHER	1	PC	
38	WASHER	1	PC	
39	WASHER	1	PC	
40	WASHER	1	PC	
41	WASHER	1	PC	
42	WASHER	1	PC	
43	WASHER	1	PC	
44	WASHER	1	PC	
45	WASHER	1	PC	
46	WASHER	1	PC	
47	WASHER	1	PC	
48	WASHER	1	PC	
49	WASHER	1	PC	
50	WASHER	1	PC	
51	WASHER	1	PC	
52	WASHER	1	PC	
53	WASHER	1	PC	
54	WASHER	1	PC	
55	WASHER	1	PC	
56	WASHER	1	PC	
57	WASHER	1	PC	
58	WASHER	1	PC	
59	WASHER	1	PC	
60	WASHER	1	PC	
61	WASHER	1	PC	
62	WASHER	1	PC	
63	WASHER	1	PC	
64	WASHER	1	PC	
65	WASHER	1	PC	
66	WASHER	1	PC	
67	WASHER	1	PC	
68	WASHER	1	PC	
69	WASHER	1	PC	
70	WASHER	1	PC	
71	WASHER	1	PC	
72	WASHER	1	PC	
73	WASHER	1	PC	
74	WASHER	1	PC	
75	WASHER	1	PC	
76	WASHER	1	PC	
77	WASHER	1	PC	
78	WASHER	1	PC	
79	WASHER	1	PC	
80	WASHER	1	PC	
81	WASHER	1	PC	
82	WASHER	1	PC	
83	WASHER	1	PC	
84	WASHER	1	PC	
85	WASHER	1	PC	
86	WASHER	1	PC	
87	WASHER	1	PC	
88	WASHER	1	PC	
89	WASHER	1	PC	
90	WASHER	1	PC	
91	WASHER	1	PC	
92	WASHER	1	PC	
93	WASHER	1	PC	
94	WASHER	1	PC	
95	WASHER	1	PC	
96	WASHER	1	PC	
97	WASHER	1	PC	
98	WASHER	1	PC	
99	WASHER	1	PC	
100	WASHER	1	PC	

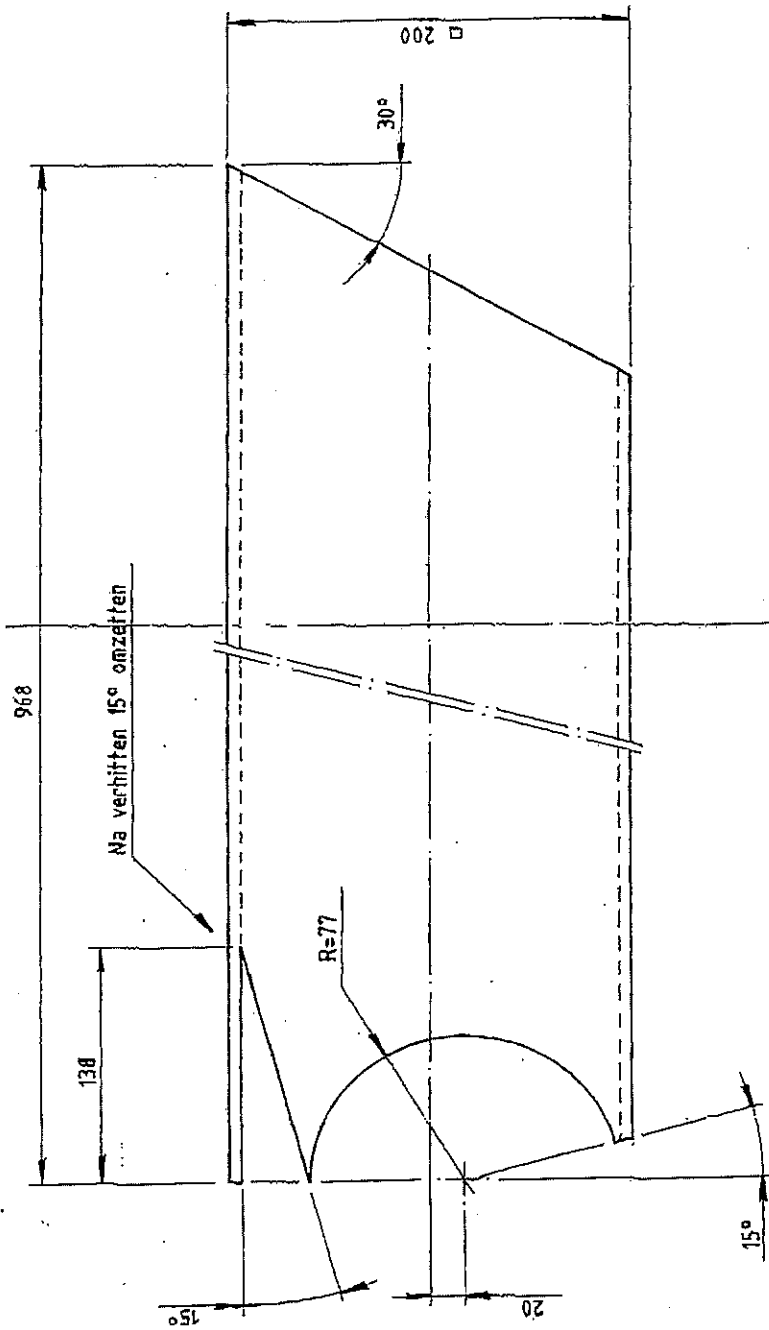
1 2


Seat Support Tube



MATERIAAL NAAM	Blanke naadloze precisiebuis	MATERIAAL KODE		MATERIAAL HANDELS AFM.	φ150x5
ALGEMENE RUWHEID	✓ Ra IN μ M	NEN 3632 3634 3637 3638		NEN 3311	PROJ. AM. SCHAAL 1 : 2
TOLERANTIES TENZIJ ANDERS VERM.	HOEK ± 5° LINEAIR ± 1	AANTAL		OPP. BEH.	
NAAM	DATUM 28 Aug. 1994	BENAMING Buis			
KONTR.	DATUM				
<p>COBRA Nederland B.V. Neede</p>	TEKENING NR.	REV.	DATUM		
	4-201626	A	16-12 1996		
AANTAL BLADEN	1	BLAD NR.	1		

Support Arm



MATERIAAL NAAM	ST37-2	MATERIAAL KODE	□ 200 X 6
ALGEMENE FORMEID	✓	NEW 3832-3834 3837-3838	MATERIAL HANDELS NR.
TOEGEWIJSDIENST ANDERS VERM.	✓	NEW 3311	PROD. A.N.
HOEK ±0,5°	✓	OPR. BEH.	SCHRIJF 1:2,5
AANTAL	1	BENAMING	Koker
DATUM	24. Sep. 1996	TEKENING NR.	REV.
KONTROL.		DATUM	DATUM
 COBRA Nederland B.V. Needs		3-202010	
		AANTAL BLADEN	BLAD NR.
		1	1

